

Information and Assistance:

Aging and Disability Resource Center (ADRC)

The ADRC can assist families in learning about options for employment and living after leaving high school or when turning 18. At age 17 1/2 the ADRC staff will assess eligibility and provide information regarding all options and make appropriate referrals to programs or service agencies

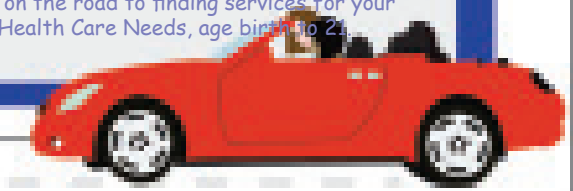
Information and Assistance:

Southern Regional Center for CYSHCN:

The Regional Center is a place to call with questions about a wide range of topics including transition, employment, housing options, community supports and connections to other youth or parents. We can answer questions and help you connect to community resources.



Welcome To XXX County
Resource Roadmap Transition...
Please use this map as a guide on the road to finding services for your Child/Youth with Special Health Care Needs, age birth to 21.



Special Education:

Transition planning begins at age 14. The IEP (Individual Education Program) team helps students identify goals for work, education and independent living after high school, as well as the people and activities that will help meet these goals.



Education After Highschool:

Postsecondary education includes many kinds of education and training programs, including: technical college degree and certification programs, apprenticeships, two and four-year colleges, private trade school, non-degree programs and on-the-job training.

Support at Home and in the Community:

Wisconsin offers an array of community-based long-term support for youth and adults with significant disabilities. These supports are designed to help individuals meet their goals for work, independent living and community participation. Eligibility is based on income and the impact of disability on a person's ability to function in their daily lives.

Recreation/Social Opportunities

Recreation can play an important role in a youth's life. A variety of organizations provide recreational activities in your community; some with a disability focus.

Health Care Coverage:

Medicaid and private insurance can help programs help pay for needed medical care, (including therapies, medication, equipment.) Medicaid programs include BadgerCare Plus, Katie Beckett (until age 19), SSI, HIRSP, MAPP and Waivers. It is important to understand eligibility and what is covered.

Public Health Department:

Public Health services may include the Personal Care program, Health Check physicals, and immunization clinics. (Including flu shots and pneumonia shots)

Legal Decision-Making at age 18:

When youth with disabilities turn 18 they have all the legal rights and responsibilities of adults. They can vote, get married, make a contract, give or refuse consent for medical treatment and make decisions independently. There are legal options for decision making which include: guardianship, powers of attorney and others

Supplemental Security Income (SSI):

SSI provides Medicaid as well as a monthly financial benefit to children and adults with a disability who meet income and assets eligibility guidelines. At age 18, parent income & assets are no longer considered. An application can be made to SSI in the month a youth turns 18.

Envisioning the Future:

Person-centered planning is a way to identify a youth's individual goals and to help youth, families and professionals craft plans that will support youth as they strive to achieve their dreams. There are many tools that families can use, both formal and informal to help a youth identify and articulate what is important to them and what they want to do "when they grow up."

Financial Planning:

Financial Planning is important to help protect financial resources to ensure payment of bills for basic support, quality of life and to ensure that larger resources are protected from loss. There are a variety of tools to assist with these issues such as special needs trusts and Powers of Attorney.

Employment:

Employment includes many kinds of choices from part time jobs to full-time careers, with or without support of outside agencies. (DVR,) the Division of Vocational Rehabilitation is a federal program which helps those with disabilities obtain gainful employment.

Learning/Leadership Opportunities:

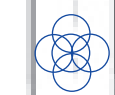
There are many opportunities for youth and parents to learn more, be leaders and get involved!

Transportation:

Transportation can be accessed through your county's transportation system. Depending on the type of transportation provided there may or may not be a cost to you.

County Programs:

County Human Services department provides access to long-term supports and services for eligible children and adults experiencing cognitive, physical and emotional disabilities. Programs include case management, respite services and other in-home, after-school and out-of-home supports.



Statewide Resources

- ABC for Health, Inc.:** nonprofit public interest law firm dedicated to ensuring health care access for children with special needs
www.safetyweb.org 1-800-585-4222
- (ADRC) Aging Disability and Resource Centers:** provides information, supports and connection to services for adults with disabilities
www.dhs.wisconsin.gov/LTCare/adrc xxx-xxx-xxxx
- (CAP) Client Assistance Program-** information and assistance to individuals who have a dispute with DVR
<http://dwd.wisconsin.gov/dvr/cap.htm> 1-800-362-1290
- (DRW) Disability Rights Wisconsin:** provides protection and advocacy for persons with disabilities in Wisconsin
www.disabilityrightswi.org/ 1-800-928-8778
- (DPI) Wisconsin Department of Public Instruction: Special Education Team:** information on public education for youth with disabilities
<http://dpi.state.wi.us/sped/tm-spedtopics.html> 1-800-441-4563
- (DVR) Wisconsin Division of Vocational Rehabilitation:** state employment training program for individuals with disabilities
<http://dwd.wisconsin.gov/dvr/> 1-800-442-3477
- (FACETS) Wisconsin Family Assistance Center for Education, Training and Support:** provides free information and assistance to families concerning parent and student rights and opportunities in education
www.wifacets.org/ 1-877-374-4677
- Family Support Program:** provides information about services and resources, funding and linkage with other families
www.dhs.wisconsin.gov/bdds/fsp/index.htm 1-920-386-3750
- Family Voices of Wisconsin:** grass roots training, information, advocacy network of families with focus on policy & budget www.fvofwi.org
- (ILCs) Wisconsin Independent Living Centers:** consumer-driven services to promote full participation in society of persons with disabilities. Services include: health benefits counseling, assistive technology, peer support and advocacy
<http://dhs.wisconsin.gov/disabilities/Physical/ILCs.htm> 1-800-642-7837
- Legal Action of Wisconsin:** non-profit agency providing legal representation to low-income people and others
www.legalaction.org 1-800-362-3904
- (NAMI) National Alliance on Mental Illness:** provides crucial information to persons affected by mental illness
<http://www.namiwisconsin.org/> 1-800-236-2988
- Parent to Parent of Wisconsin:** provides one-to-one connection with another parent who has similar experience and who knows firsthand about the feelings and realities that come with having a child with special needs
www.p2pwi.org/ 1-888-266-0028
- Respite Care Association of Wisconsin:** promote, support and expand quality respite care resources across the lifespan for families
www.respitecarewi.org/ 1-866-702-7229
- (SSI) Supplemental Security Income:** financial benefits (including SSI, SSDI) for youth meeting income and asset eligibility criteria
www.ssa.gov 1-800-772-1213
- WATI:** a volunteer network of assistive technology (AT) consultants providing training within Wisconsin educational settings www.wati.org/
- WisTECH:** provides information on selecting, funding, installing and using assistive technology
<http://dhs.wisconsin.gov/disabilities/wistech/> 1-608-267-9091
- Wisconsin Council of the Blind & Visually Impaired:** services, advocating legislation and educating the general public
www.wcblind.org/ 1-800-783-5213
- Wisconsin Family Ties:** network of Family Advocates who provide support groups, peer-mentoring, training, advocacy, information and referral for families that include children and youth with mental, emotional, behavioral or substance abuse disorders
www.wifamilyties.org/ 1-800-422-7145
- Wisconsin First STEP:** 24-hour information and referral service to assist Wisconsin families who have children with special needs
www.mch-hotlines.org 1-800-642-7837
- Wisconsin Regional Centers for Children and Youth with Special Health Care Needs (CYSHCN)** - a network of information and assistance services for families of children /youth ages 0-21 with disabilities or special health care needs
www.dhs.wisconsin.gov/health/children/resourcecenters 1-800-532-3321
- (WSPEI) Wisconsin Statewide Parent Educator Initiative:** parent liaisons that work with families, educators and school districts through the CESA's to promote positive partnership and free consultation to families of children with special educational needs
<http://dpi.wi.gov/sped/parent.html> 1-877-844-4925
- (WSTI) Wisconsin Statewide Transition Initiative**
www.wsti.org/ 1-715-986-2020 ext. 2122

HEALTH COVERAGE

- ACCESS:** online tool to apply for help through Wisconsin's health, nutrition and other programs..... <https://access.wisconsin.gov/access/>
- Managed Care Ombudsman:** investigates and resolves problems, provides information, referral and consultation and works with licensing, certification, and other enforcement agencies to improve the quality of care in long term programs
<http://dhs.wisconsin.gov/aging/boaltc/lcombud.htm> 1-800-815-0015
- Medicaid (Medical Assistance, M.A., Title 19, BadgerCare Plus, Katie Beckett, SSI, MAPP, HealthCheck) Recipient Hotline:** information about eligibility, rights, covered benefits, providers, problems with bills, etc. for those with Medicaid 1-800-362-3002
- HIRSP:** Wisconsin's high-risk health insurance pool www.hirsp.org/ 1-800-828-4777

XXX County Resources

Health Care:

Coverage/ Insurance:

- HIRSP- Health Insurance Risk Sharing Plan.....221-4551
- Medicaid:
- Katie Beckettxxx-xxx
 - Badger Care <https://access.wisconsin.gov>
 - MAPP-Medicaid Purchase Planxxx-xxx
 - SSI-Supplemental Security Incomexxx-xxx

Support at Home and in the Community:

- Family Care <http://dhs.wi.gov/lcicare/>
- IRIS <http://dhs.wi.gov/bdds/IRIS/index.htm>
- Partnership <http://dhs.wisconsin.gov/wipartnership/>
- CIP <http://dhs.wisconsin.gov/bdds/cip/index.htm>

Learning/ Leadership Opportunities:

For Youth:

- Wisconsin Youth First: www.wiyouthfirst.org
- Peer Power:xxx-xxx-xxxx
- YiPPE:xxx-xxx-xxxx

For Parents:

- DYK Trainings:xxx-xxx-xxxx
- WSTI:xxx-xxx-xxxx
- YIPPE:xxx-xxx-xxxx
- For additional opportunities for both youth and parents: URL

Legal Decision Making at age 18:

- On turning 18 booklet:
www.legalexplorer.com/resources/database/PubPDFs/54-ONB18.pdf
 Wisconsin Guardianship Support Center 800-488-2596

Mental Health Resources:

Recreation/ Social Opportunities

Special Education:

Transportation

- Logisticare- for those with Medicaid and BadgerCare Plus
 1-866-907-1493

Other Community Resources:

Support groups?

Information and Assistance:

- ADRCxxx-xxx-xxxx
- Regional Centerxxx-xxx-xxxx
- First Stepxxx-xxx-xxxx

County Government Resources

Economic Support:

Education after High School:

- Technical colleges.....xxx-xxx-xxxx
- UW colleges or universities xxx-xxx-xxxx
- Private collegesxxx-xxx-xxxx

Employment:

Envisioning the Future

- Dept. of Public Instruction Opening Doors Series:
 (Post-secondary education, Self Determination, Employment)
www.dpi.state.wi.us/sped/pdf/tranopndrs.pdf
www.dpi.wi.gov/sped/pdf/tranopndrs-self-determination.pdf
www.dpi.state.wi.us/sped/pdf/tranopndrs-employmt.pdf

Financial Planning